

# Pull-Apart Contact

## AMPS-10 Series

## Product Specifications

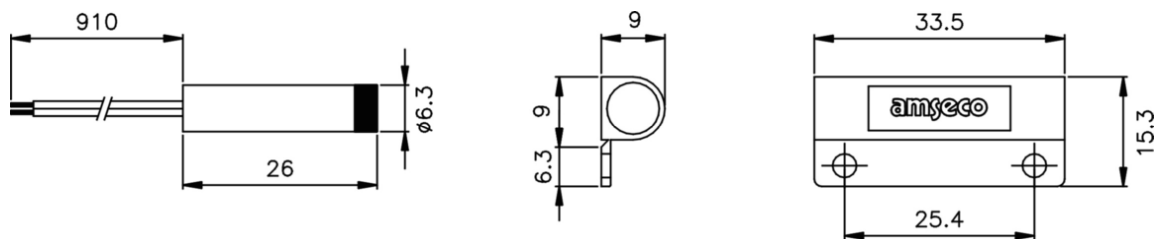
### 1. Features

Reed-actuated for high reliability

- Alnico 5 magnet
- UL ABS Grade plastic housing
- 36" wire lead AWG #22 jacketed wire
- Hermetically sealed
- Adhesive or screw mount
- Quick, easy convenient break-off tabs
- Mounting hardware included
- Available colors: Brown, Gray, Ivory, White



### 2. Dimensions



### 3. Specifications

Model Number	Operating Gap	Contact Type	Max. Switching Current	Max. Carry Current	Breakdown Voltage	Rating	Magnet Type	Mounting Method	Operating Temperature Range
AMPS-10A	1/2"	N.O	0.5A	1.0A	250V DC	10VA	Alnico 5	Recess Or Surface	32°F ~ 120°F (0°C ~ 49°C)
AMPS-10B		N.O N.C	0.2A	0.5A	200V DC	3VA			

The specification is subject to change without any prior notice for the improvement or modifications